

# BELIZE MAYA FOREST

Belize's Newest Protected Area

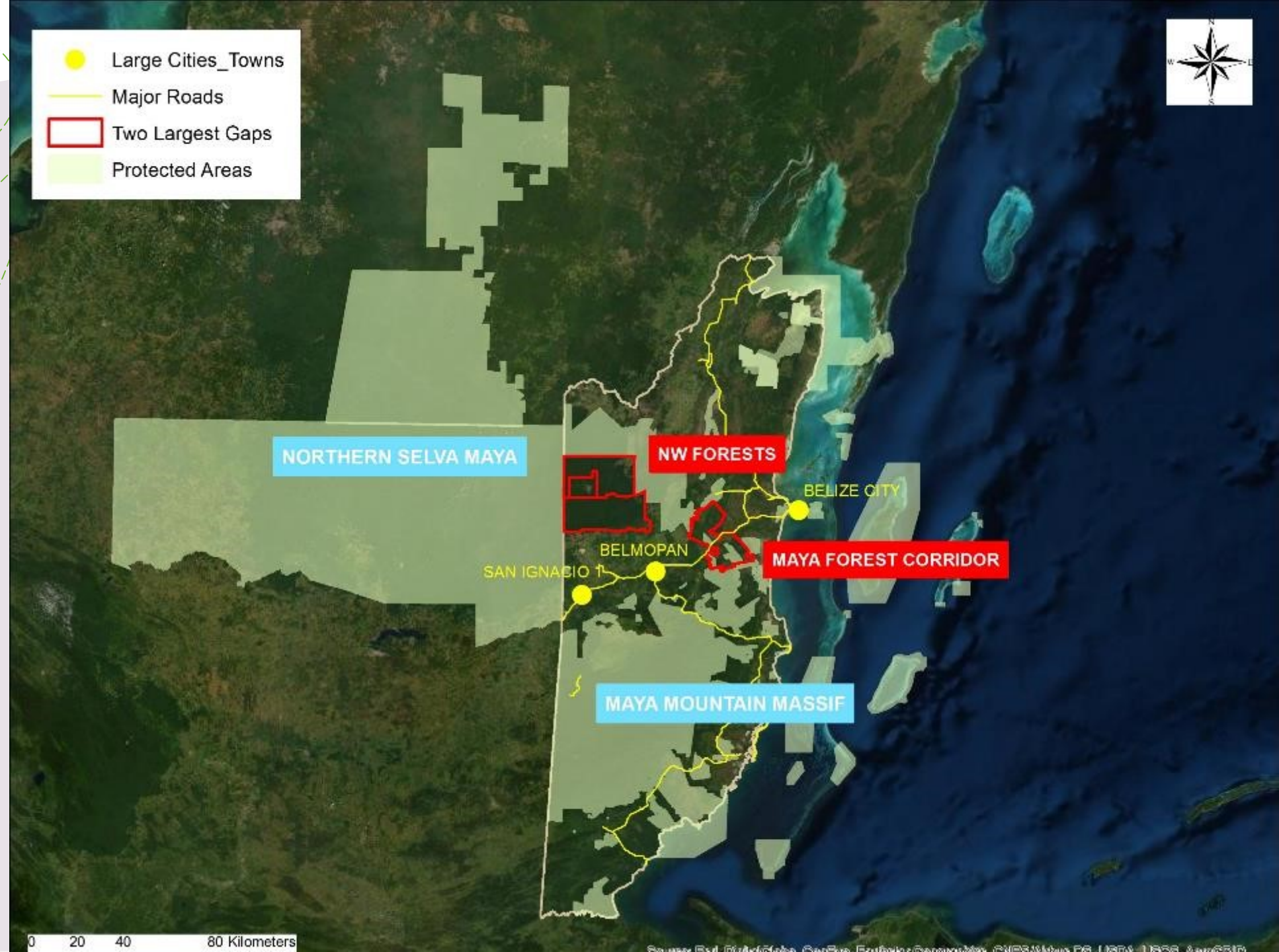
Elma Kay, Ph.D.  
Managing Director  
Belize Maya Forest Trust  
[ekay@bmft.org.bz](mailto:ekay@bmft.org.bz)  
+501 610 3982

# BELIZE MAYA FOREST

- + 236,000 acres of privately-owned lands purchased by The Nature Conservancy and partners
- + Largest threat was clear-cutting for mechanized agriculture
- + Together with Rio Bravo, BMF makes ½ million acres of last remaining lowland forest and 9% of Belize's territory that are next to trinational Selva Maya
- + BMF's protection takes Belize to protected land territory of 40%
- + Directly adjoins protected forest in Guatemala

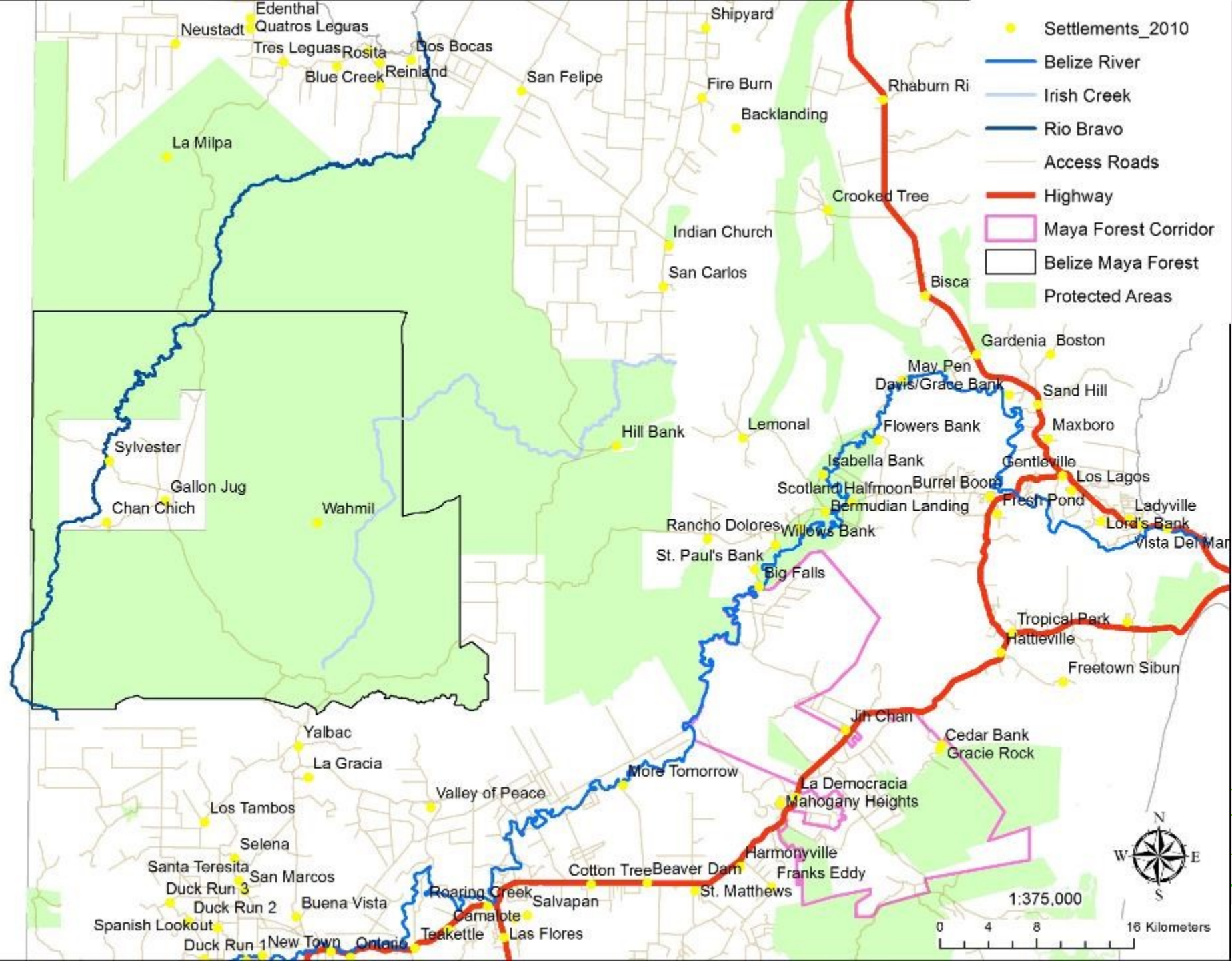


- Large Cities\_Towns
- Major Roads
- Two Largest Gaps
- Protected Areas



0 20 40 80 Kilometers

Source: Earthwatch Institute, 2005. Earthwatch Institute, 2005. Earthwatch Institute, 2005. Earthwatch Institute, 2005. Earthwatch Institute, 2005.





2016 © Tony Rath Photography / TonyRath.com



Kelly et al. 2021 Report to the Forest Department

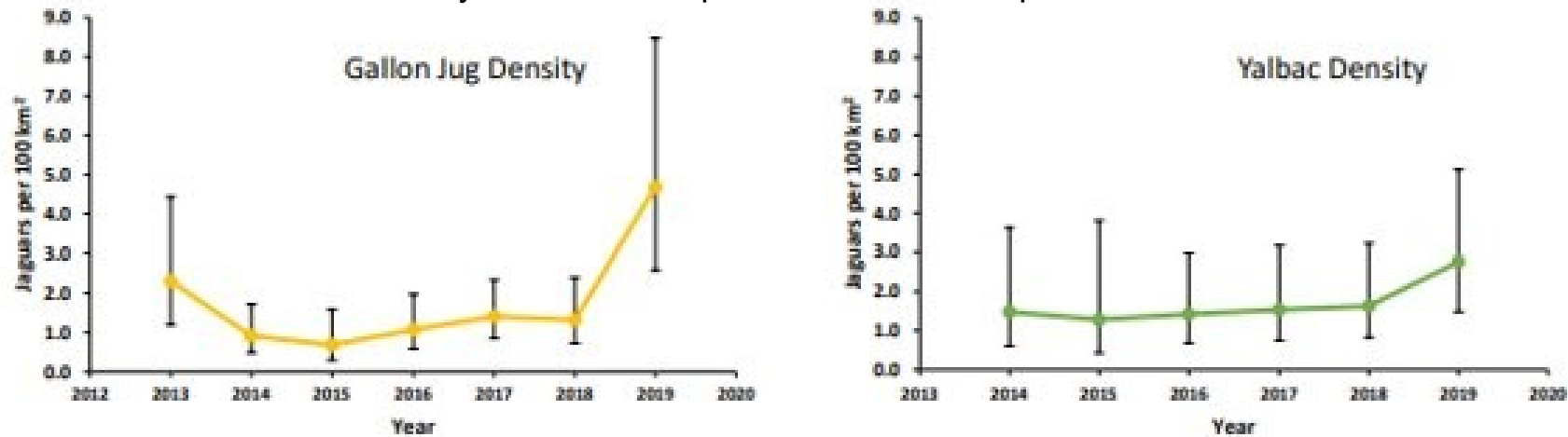


Figure 3. Jaguar density estimates (per 100 km<sup>2</sup>) calculated with spatially explicit capture-recapture (SECR) models run using R package secr for four study sites in northern Belize. All y-axes are on the same scale but the time periods (x-axis) run for different number of years (6 to 11 years). Error bars are 95% confidence intervals.

All photos courtesy of  
VT Belize Jaguar Project

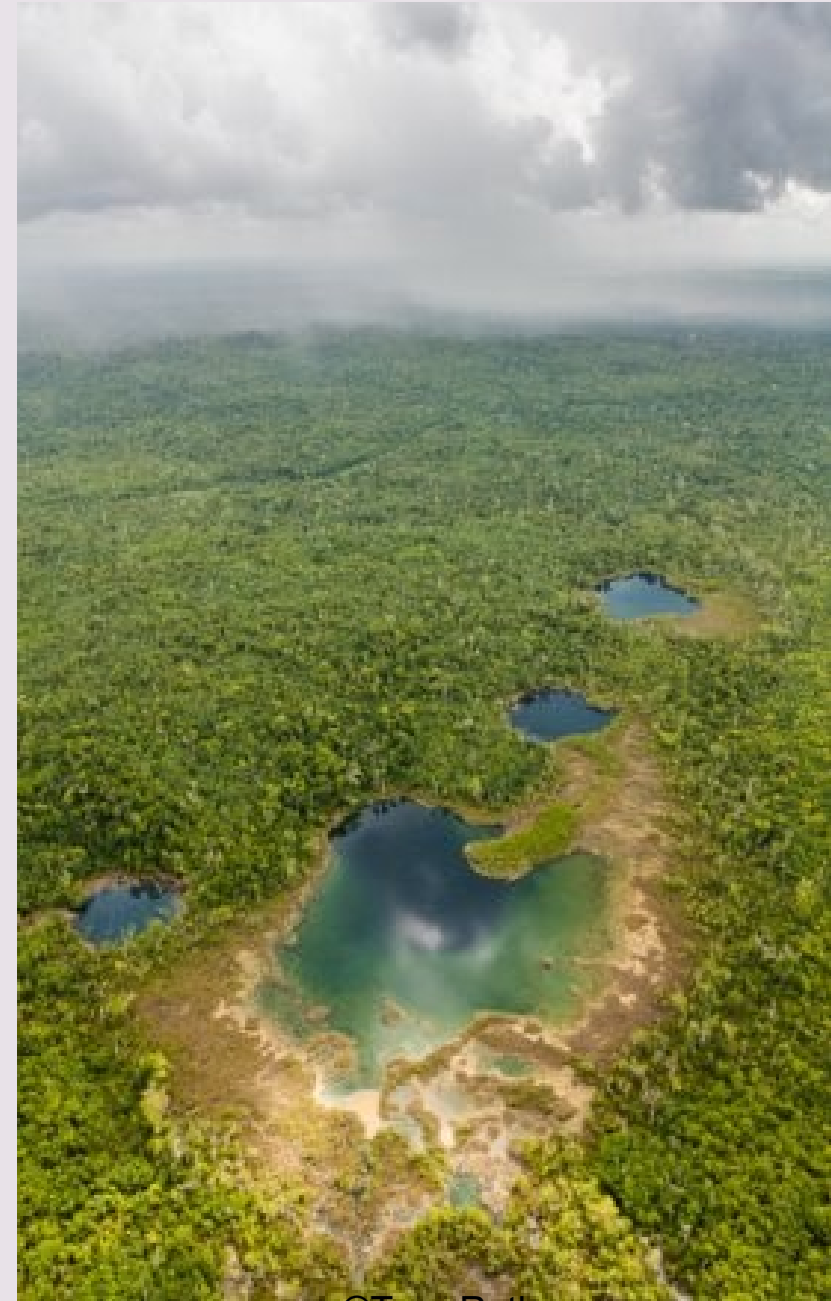


# HISTORY AND THREATS



# BELIZE MAYA FOREST TRUST

- + Local not for profit incorporated in December 2020 to be the Trustee of the Belize Maya Forest
- + NGO status acquired in August 2021
- + Mission: *To demonstrate a globally recognized, locally relevant model of healthy, biodiverse forest protected for and by all Belizeans*
- + Vision: *For BMFT to be a global benchmark for effective and lasting conservation*



# BELIZE MAYA FOREST AND CARBON

- + Not the first carbon project for Belize
- + First project for which an agreement on carbon rights has been signed
- + First project for which carbon is to provide all operating expenses for the management of the protected forest
- + Project to be developed under Verra, the verified carbon standard, under an avoided deforestation module
- + Carbon credits or tradable GHG emissions or offsets to be sold on the voluntary market

# OPPORTUNITIES FOR PRIVATE LANDS

- + Carbon rights and carbon rights legislation
- + Capacity for individual project development and verification vs. National REDD+
- + International standards to quantify emission reductions from sustainable agricultural practices
- + Good market price right now especially for quality credits and emphasis on removals/restoration vs. offsets
- + Private Protected Areas Regulations
- + Conservation Easements

# Conservation Action Planning with Stakeholders



# Program Design:

Protection

Community Outreach and Livelihoods

Sustainable Agriculture

Ecological Monitoring



# THANK YOU

MOULTRIE

29°C

MOULTRIECAM

26 AUG 2019 07:05 pm